



WARNINGS

- When the power cord is damaged, it must be replaced with a genuine power cord purchased from the manufacturer or after-sales service department.
- This appliance can be used by children aged from 8 years and above and persons with reduced physical, sensory or mental capabilities or lack of experience and knowledge if they have been given supervision or instruction concerning use of the appliance in a safe way and understand the hazards involved.
- Children shall not play with the appliance. Cleaning and user maintenance shall not be made by children without supervision.
- Make sure the purifier is turned off and unplugged before performing the maintenance. Fix the grille with screw after cleaning fan blades and air duct.
- This appliance contains a UV-C emitter.
- Do NOT replace the UV-C emitter.
- Unintended use of the appliance or damage to the housing may result in the escape of dangerous UV-C radiation. UV-C radiation may, even in little doses, cause harm to the eyes and skin.
- Appliances that are obviously damaged must not be operated.

Precautions

- Turn off and unplug the purifier before moving it.
 - When moving the purifier, do not touch the release buttons of the upper compartment. Otherwise, the filter compartment may fall off and a possible injury may occur.
-

- The purifier cannot turn on when the fan grille and the filter compartment cover are not installed properly.
 - Maintain a distance of at least 20 cm between the air inlets and walls or other objects.
 - The purifier must be placed on firm and flat floor.
-

- Prior to cleaning or other maintenance, the appliance must be disconnected from the supply mains.
 - Frequently remove dust, hair, and other particles from the outer mesh screen of the filter, so as to reduce the chance of bacteria growth.
 - Remove dust, hair, and particles from the purifier's air inlets to prevent a reduction of air intake.
 - Cover the air outlet to prevent dust, hair, and other particles from falling in when the purifier is left unused for a long time.
-

To avoid fire, electric shocks, or other damage, use the power cord and electrical outlet as instructed below:

- Do not excessively pull, twist or bend the power cord; otherwise, the cord's core may be exposed or broken.
 - The power cord must be plugged into a suitable electrical outlet.
 - Use the power cord that is provided with the purifier, do not use any third-party power cords.
 - Always unplug the purifier before carrying out maintenance to or moving the purifier.
-

- Immediately stop using the purifier when it makes unusual sounds, gives off bad odors, overheats, or its fan rotates irregularly.
 - Do not stick your fingers or foreign objects into the protective parts, movable parts, air inlets, or air outlets.
 - Keep objects such as hairs or fabrics away from the purifier to avoid blocking the air inlets or air outlets.
 - Do not sit on, lean on or tilt the purifier.
 - When using in conjunction with gas-fueled appliances (such as gas stoves, gas heaters), please ventilate sufficiently to avoid carbon monoxide poisoning.
 - Do not pour liquids, nor throw powders or other small substances into the purifier's air outlet.
 - Make sure no inflammable objects get into the purifier.
-

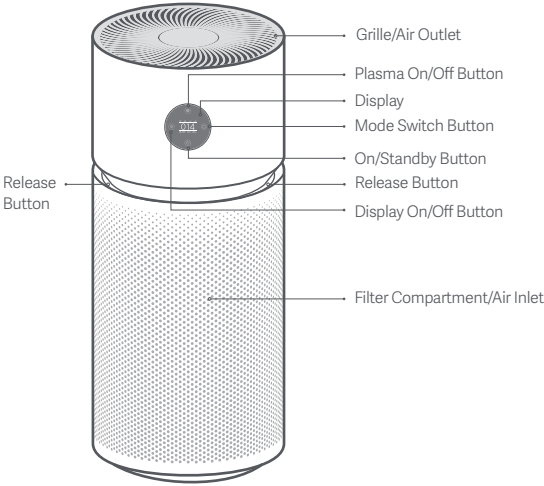
Do not use the purifier in the following circumstances to avoid electric shocks, fire, or other damage:

- Near open flames, such as candles, incense burners, stoves, fireplaces, cigarettes, firecrackers, lighters, multipurpose torches, candle lighters, or fire pans.
- Near appliances that generate high temperatures, such as electric heaters, fan heaters, electric foot warmers, electric stoves, or electric irons.
- In unstable locations where the purifier can easily fall over.
- In environments that are extremely hot, humid, or damp, such as bathrooms.

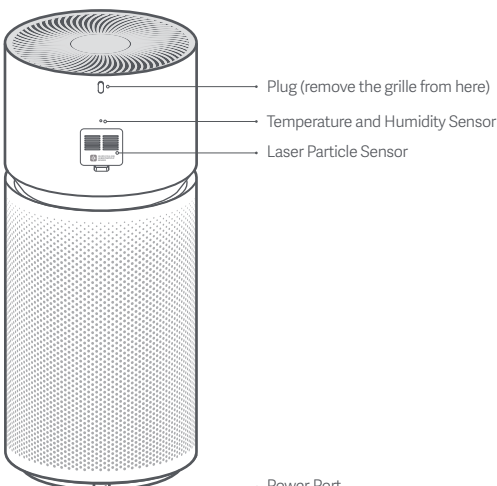
Product Overview

Read this manual carefully before use, and retain it for future reference.

Note: Illustrations of the product, accessories, and user interface in this user manual are for reference purposes only. The actual product and functions may vary due to product enhancements.

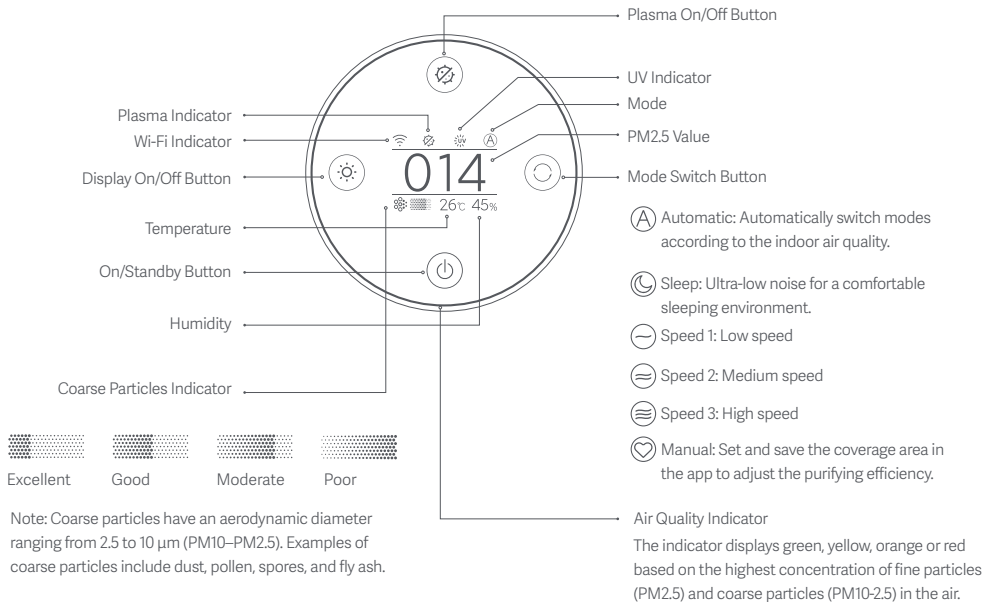


Front View



Rear View

Display Instructions



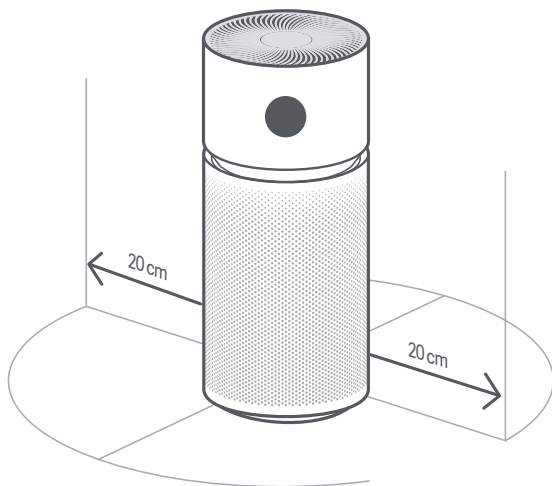
Note: Coarse particles have an aerodynamic diameter ranging from 2.5 to 10 μm (PM10-PM2.5). Examples of coarse particles include dust, pollen, spores, and fly ash.

		Coarse Particles			
		Excellent	Good	Moderate	Poor
PM2.5 Value	1-20 $\mu\text{g}/\text{m}^3$	Green	Yellow	Orange	Red
	21-35 $\mu\text{g}/\text{m}^3$				
	36-55 $\mu\text{g}/\text{m}^3$				
	>55 $\mu\text{g}/\text{m}^3$				

How to Install

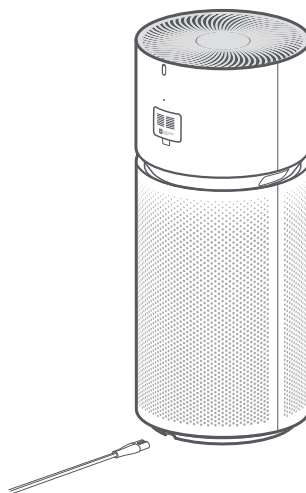
Placing the purifier

For optimal performance, make sure the distances between purifier's air inlets and other objects such as walls meet the requirements as suggested below.



Connecting to an electrical outlet

Connect the power cord to the power port at the bottom of the purifier and then plug it into an electrical outlet.



Note: It is recommended to keep doors and windows closed for a better purifying effect when using the purifier.

How to Use

On/Standby

Tap the on/standby button to turn on the purifier. When the purifier is on, tap the on/standby button to enter standby mode.



Switching mode

While the purifier is on, tap the mode switch button to cycle through modes.



Enabling & disabling plasma/UV sterilization

Tap the plasma on/off button to enable or disable plasma sterilization. Tap and hold the plasma on/off button for seven seconds to enable or disable UV sterilization.



Adjusting the display's brightness

Press the display on/off button to cycle through its brightness levels: on, dim, and off.



Resetting Wi-Fi

When connecting the purifier to the app for the first time or unable to connect to it, press and hold the display on/off button for 7 seconds. The purifier will make a notification sound once Wi-Fi is successfully reset.



Enabling/disabling the child lock function

Press and hold the mode switch button for 7 seconds to enable or disable the child lock function. The purifier will make the corresponding notification sound and show the corresponding icon on the display.



Child Lock Enabled

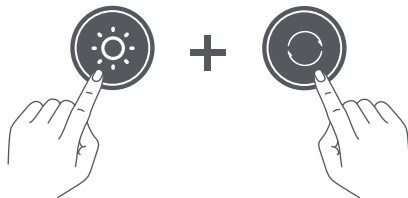


Child Lock Disabled

Enabling/Disabling Wi-Fi

Simultaneously press and hold the mode switch button on the display and the display on/off button for 7 seconds. The purifier will make a notification sound and the Wi-Fi will be disabled.

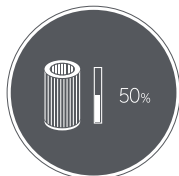
While Wi-Fi is off, simultaneously press and hold the mode switch button on the display and the display on/off button for 7 seconds. The purifier will make a notification sound and the Wi-Fi will be enabled.



Filter life notification

The display will show the remaining service time of the filter when the purifier is turned on.

The display will show a warning icon if no genuine filter is detected.



Filter service time
remaining notification



Not a genuine filter
warning

Connecting with the Mi Home/Xiaomi Home App

This product works with the Mi Home/Xiaomi Home app*. Control your device with Mi Home/Xiaomi Home app.

Scan the QR code to download and install the app. You will be directed to the connection setup page if the app is installed already. Or search for "Mi Home/Xiaomi Home" in the app store to download and install it.

Open the Mi Home/Xiaomi Home app, tap "+" on the upper right, and then follow the instructions to add your device.

*The app is referred to as Xiaomi Home app in Europe (except for Russia). The name of the app displayed on your device should be taken as the default.

Note: The version of the app might have been updated, please follow the instructions based on the current app version.



D29D97D

Replacing the Filter

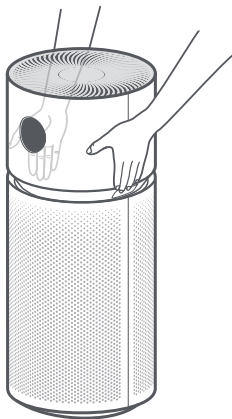
⚠ Warning: Make sure the purifier is turned off and the power cord is unplugged before replacing the filter.

Notes:

- To avoid injuries, do not put your fingers between the upper and filter compartments when replacing the filter.
- Unpack the new filter before replacing the old one.

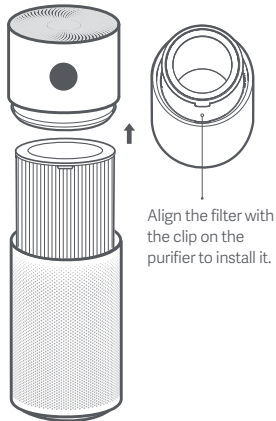
1 Opening the filter compartment

Press and hold the release buttons with both of your hands to separate the upper compartment from the filter compartment.



2 Replacing the filter

Remove the old filter upwards and place the new filter into the filter compartment. Then reinstall the upper compartment. The dirt may rise in the air when removing the old filter, and it is recommended to wear gloves and a mask before replacing the filter. Then put the old filter into a plastic bag, and secure the bag before discarding it. If you come into physical contact with dust, wash it off with water instead of wiping it off.



Align the filter with the clip on the purifier to install it.

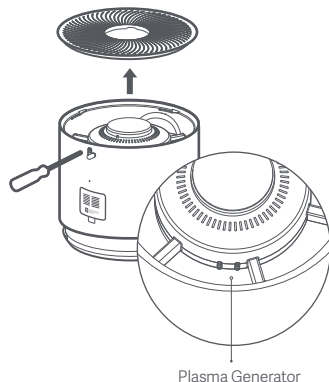
Note: This purifier is compatible with the model AFEF77FX19 filter.

Daily Care & Maintenance

⚠ Warning: Make sure the purifier is turned off and unplugged before performing the following operations.

Cleaning fan blades and air duct

- Open the plug, loosen the screw inside it with a screwdriver, and rotate the grille clockwise to remove it upwards.
- Use a vacuum cleaner to remove any dust from the air duct and fan blades, or wipe the dust off gently with a soft cloth.
- Use a brush or soft cloth to gently wipe the plasma generator.
- After cleaning, rotate the grille counterclockwise to install it. Tighten the screw with a screwdriver, and close the plug.

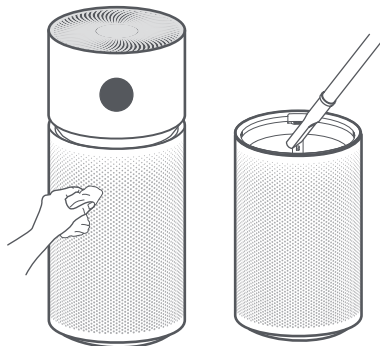


Plasma Generator

Note: To avoid damaging the purifier, do not rinse or spray the air duct and fan blades directly with water, or wipe them with a soaking wet cloth.

Cleaning the filter compartment

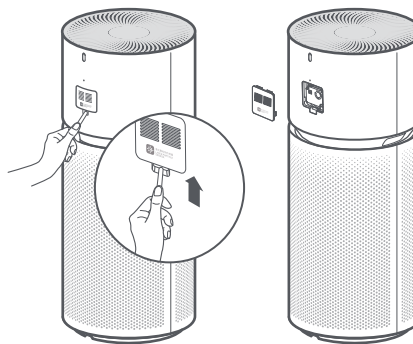
To ensure optimal ventilation and purification, use a vacuum cleaner to remove any dust from the air inlets and the filter compartment, or wipe these areas gently with a soft cloth.



Note: To avoid damaging the purifier, do not rinse or spray the filter compartment directly with water, or wipe it with a soaking wet cloth.

Cleaning the laser particle sensor

Use a non-sharp tool to open the cover of the laser particle sensor, then use an air blow gun or hair dryer to clean the filter on the cover and the sensor, as illustrated in the figure.



Note: Do not use hot air.

Specifications

Name: Air Purifier

Model: Y-600

Item Dimensions: $\Phi 310 \times 730$ mm

Net Weight: Approx. 6.5 kg

Rated Voltage: 100–240 V~

Rated Frequency: 50/60 Hz

Rated Power: 60 W

Noise Level: ≤ 68 dB(A)

Calculated according to standard GB/T 18801-2015

Network Standby Power Consumption: < 2.0 W

Particle Purification Efficiency: High

Particle's Clean Air Delivery Rate (CADR Particle): $600 \text{ m}^3/\text{h}$

TVOC Clean Air Delivery Rate (CADR TVOC): $135 \text{ m}^3/\text{h}$

Wireless Connectivity: Wi-Fi IEEE 802.11 b/g/n 2.4 GHz

Storage Temperature: -10°C to 40°C

Storage Humidity: 5%–90%

Production Date: See packaging

For details of the importer, please refer to the box.

RF Specification:

Wi-Fi 2.4 GHz (2400–2483.5 MHz), Max. RF Output Power: < 20 dBm

RFID (13.56 MHz), Max. Magnetic Field Strength: $< 42 \text{ dB}\mu\text{A}/\text{m}@10 \text{ m}$

Under normal use of condition, this equipment should be kept a separation distance of at least 20 cm between the antenna and the body of the user.

Regulatory Compliance Information

Europe — EU declaration of conformity



Hereby, Beijing Smartmi Electronic Technology Co., Ltd. declares that the radio equipment - Air Purifier, type Y-600 is in compliance with Directive 2014/53/EU. The full text of the EU declaration of conformity is available at the following internet address: <http://www.mi.com/global/service/support/declaration.html>

Disposal and recycling information



All products bearing this symbol are waste electrical and electronic equipment (WEEE as in directive 2012/19/EU) which should not be mixed with unsorted household waste. Instead, you should protect human health and the environment by handing over your waste equipment to a designated collection point for the recycling of waste electrical and electronic equipment, appointed by the government or local authorities. Correct disposal and recycling will help prevent potential negative consequences to the environment and human health. Please contact the installer or local authorities for more information about the location as well as terms and conditions of such collection points.

- Manufactured for: Xiaomi Communications Co., Ltd.
Manufactured by: Beijing Smartmi Electronic Technology Co., Ltd.
(a Mi Ecosystem company)
Address: Room 6111, 1st Floor, Building 6, No.18 Xueqing Road, Haidian District, Beijing, China

For further information, please go to www.mi.com

For detailed e-manual, please go to www.mi.com/global/service/userguide

Made in China

Importer:

Beryko s.r.o.

Pod Vinicemi 931/2, 301 00 Plzeň

www.beryko.cz



EU-220908